



Local Authority Waters Programme

Lough Carra Catchment Association Meeting

13th September 2018

Bernie White, Catchment Manager, Western Region



BACKGROUND

The Water Framework Directive 2000/60/EC

- European Parliament and Council in October 2000
- ‘a framework for community action in the field of water policy’ – *information, consultation, active involvement*.
- To protect and restore ‘*healthy waters*’ in rivers, lakes, estuaries, groundwater and coastal areas.

Overall aim: “to achieve good ecological status in all waters”

Drivers: social and economic benefits of healthy waters.



Water Framework Directive

- River Basin Management Plans (RBMPs)
- Programmes of Measures (PoMs)
- Six year cycles



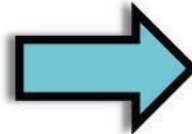
- Step 1* - Catchment characterisation – *defining the problems.*
- Step 2* - RBMP & PoMs – *setting targets and programmes.*
- Step 3* - Implement measures – *delivering improvements.*
- Step 4* - Monitor and evaluate – *gather data and information.*
- Step 5* - Report to EC – *summary of progress and outcomes.*



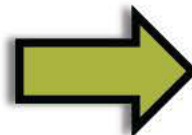
New governance structure

- 2014 EU Water Policy Regulations (S.I. No. 350 of 2014)
- Competent authorities for WFD; Minister, EPA, Local Authorities.
- Greater responsibilities on Local Authorities.

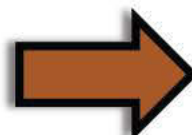
Minister - direction of water policy



EPA - science underpinning RBMPs and PoMs



LAs – regional coordination and public engagement



WFD three tier governance structure:

Tier 1

Policy & Oversight

Water Policy
Advisory Committee

Tier 2

Technical Implementation
Networking & Reporting

EPA
(EPA Catchments Unit)

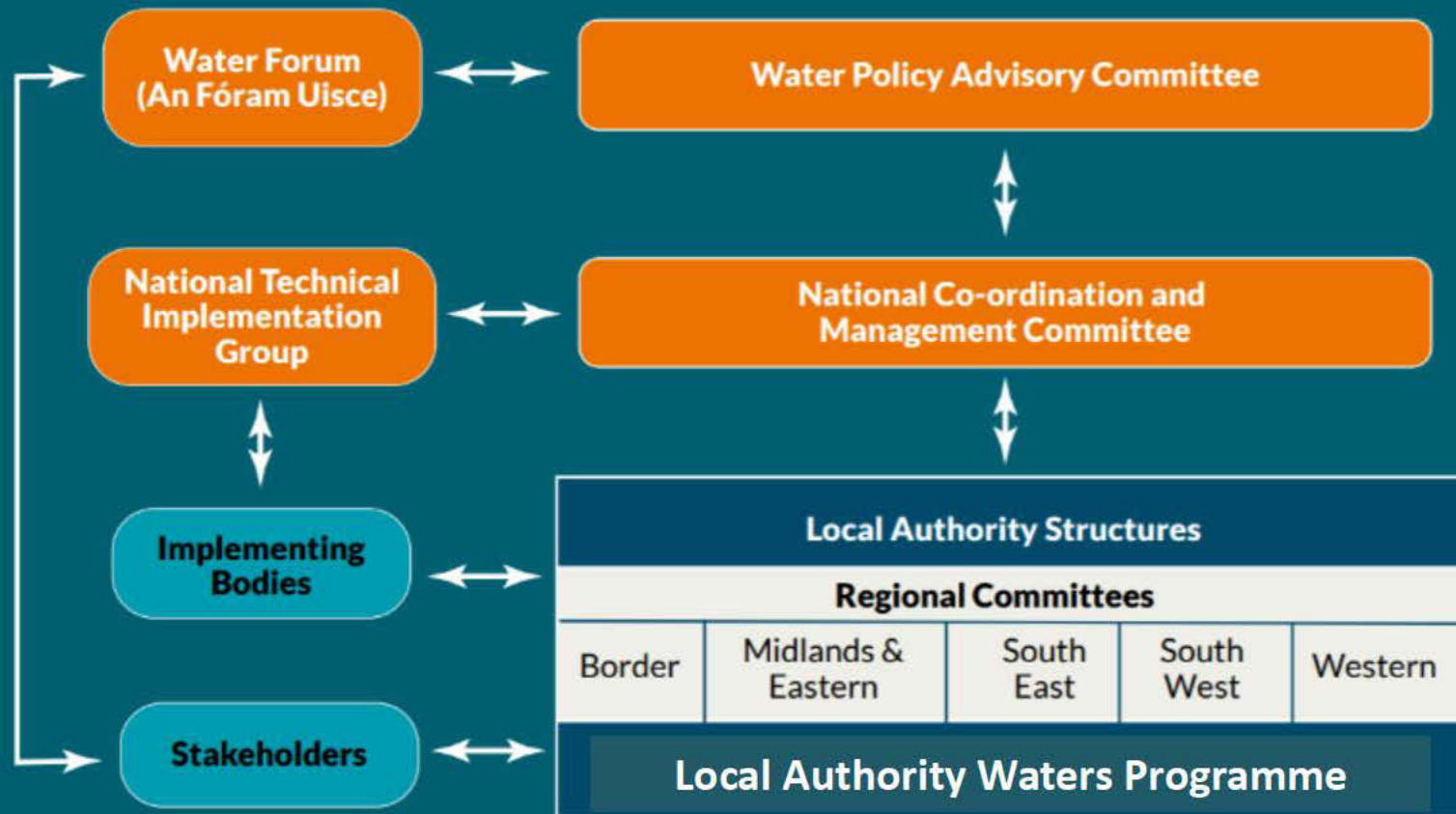
Tier 3

Regional Coordination
& Public Participation

Local Authority Waters
& Communities Office
Local Authorities implementing
the RBMP and POMs



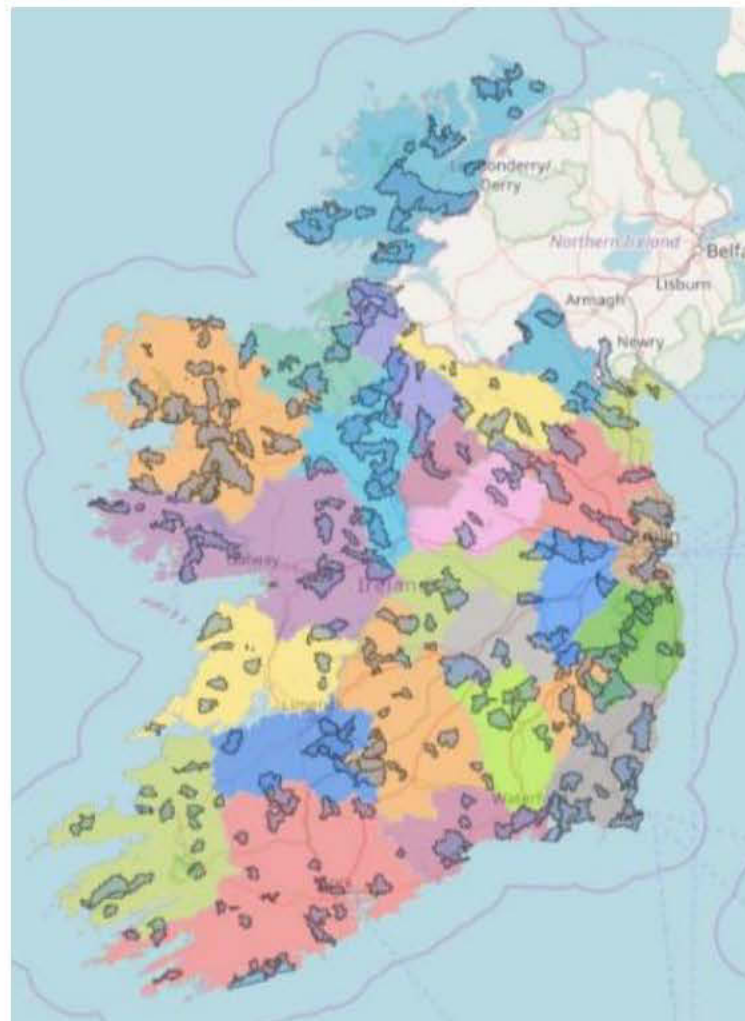
New Implementation structure





Priority Areas for Action

- 5 Regional Catchment Characterisation Workshops in 2017.
- Built on EPA evidence.
- All 31 LAs involved.
- Relevant public agencies involved.
- Expert local knowledge and discussion.
- 190 Priority Areas for Action identified.



For more information see
www.watersandcommunities.ie



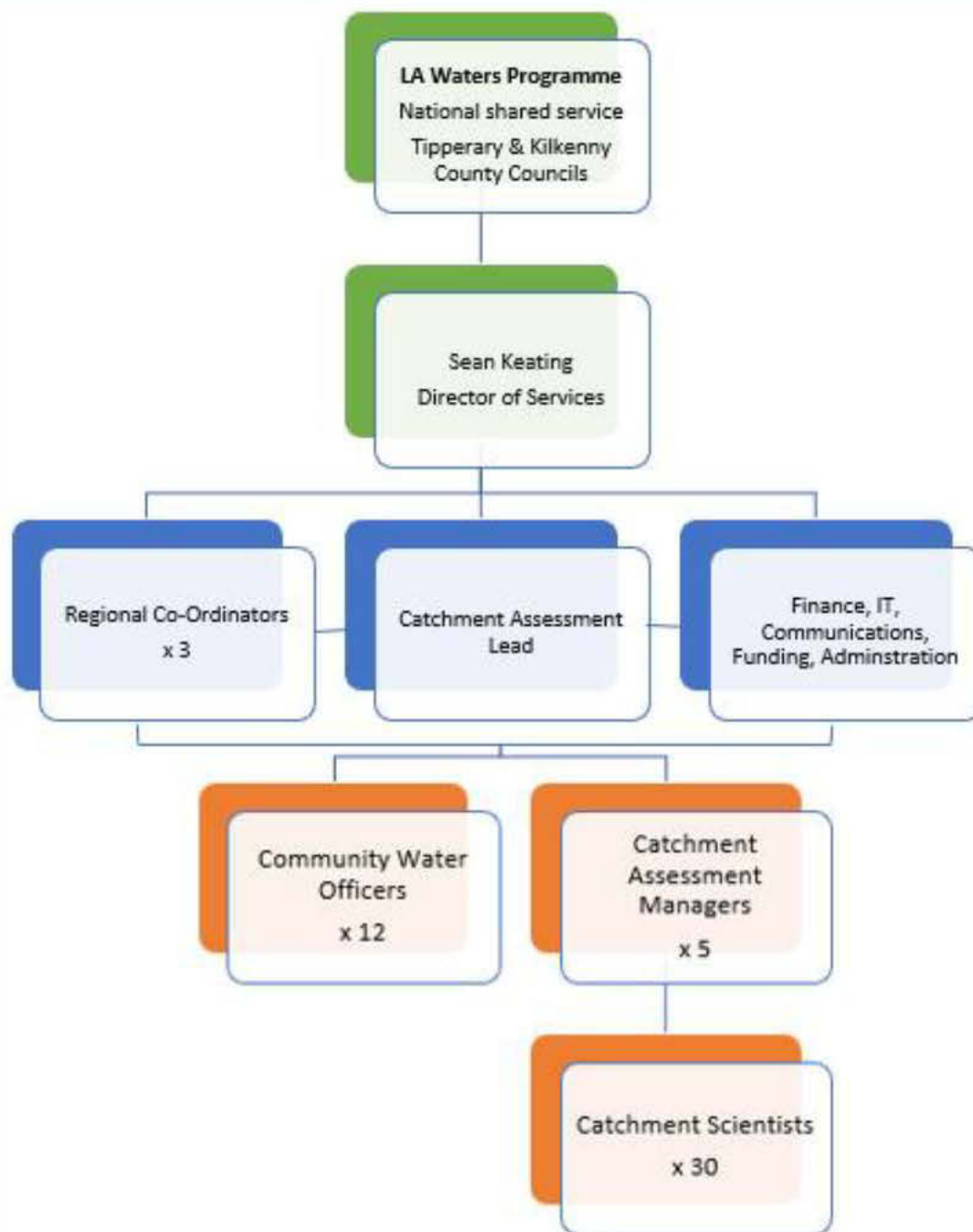
Local Authority Waters Support and Advice Team (LAWSAT)

- Shared service alongside the Waters & Communities Office (LAWCO). 35 Scientists – 7 per Region.
- *Further assessments* of the 190 Priority Areas for Action.
- Collaborative approach with stakeholders, agencies and LAs.
- Working with industry, farmers and local stakeholders to find solutions.
- Public meetings will be held in Priority Areas for Action in advance of further catchment assessments.

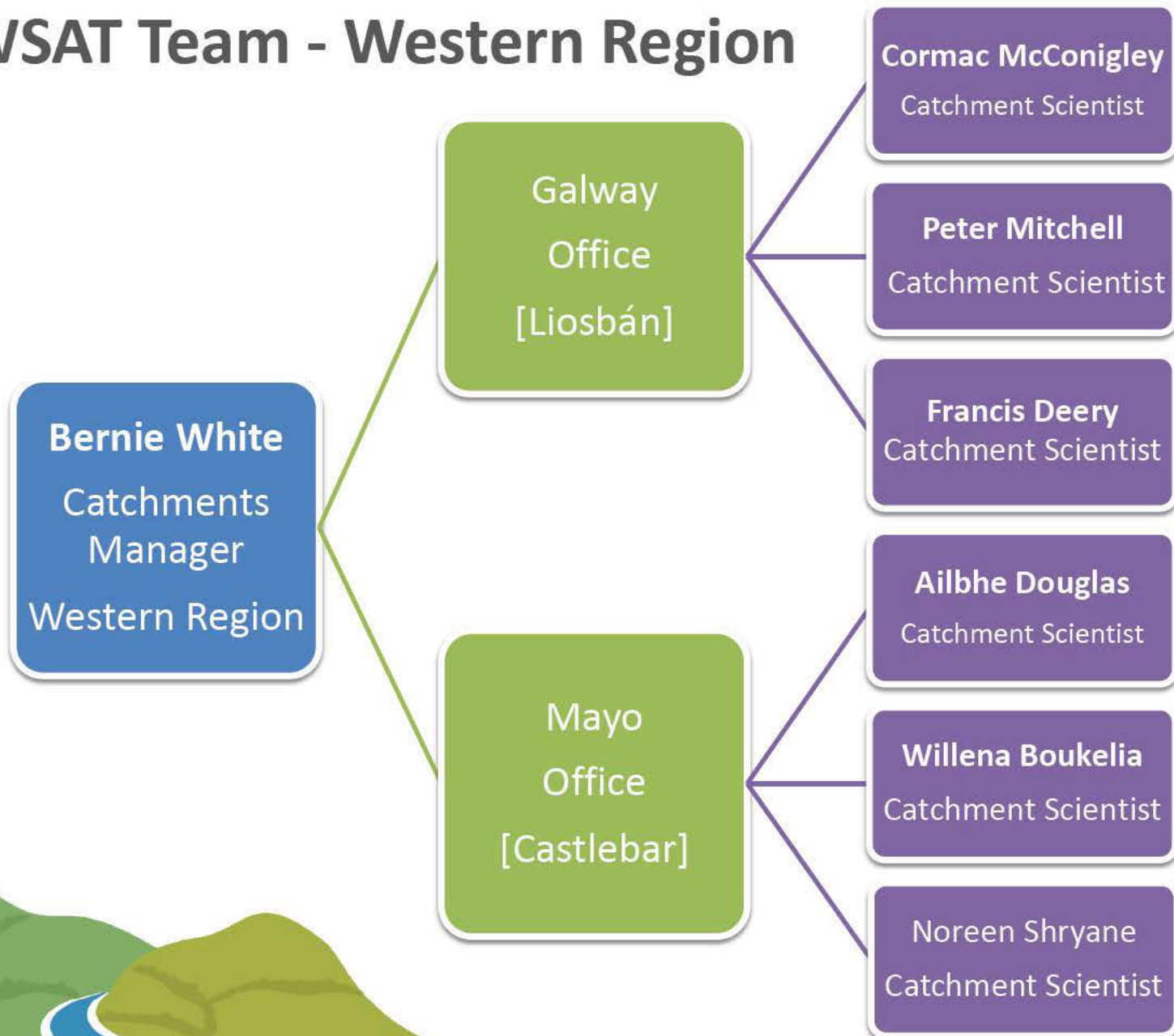




Local Authorities Water Programme



LAWSAT Team - Western Region





Agricultural Sustainability Support and Advisory Programme

- 30 new Agricultural Advisors.
- Funded by DHPLG, DAFM and the Dairy Co-ops (Dairy Industry Ireland).
- Staff work under Teagasc and the Dairy Co-ops.
- Link with LAWSAT in Priority Areas for Action.
- One-to-one with farmers – free advice and solutions.
- Best agricultural practices in Priority Areas for Action e.g. Nutrient Management Planning, management of farmyards and roadways; pesticides etc.



ASSAP Team

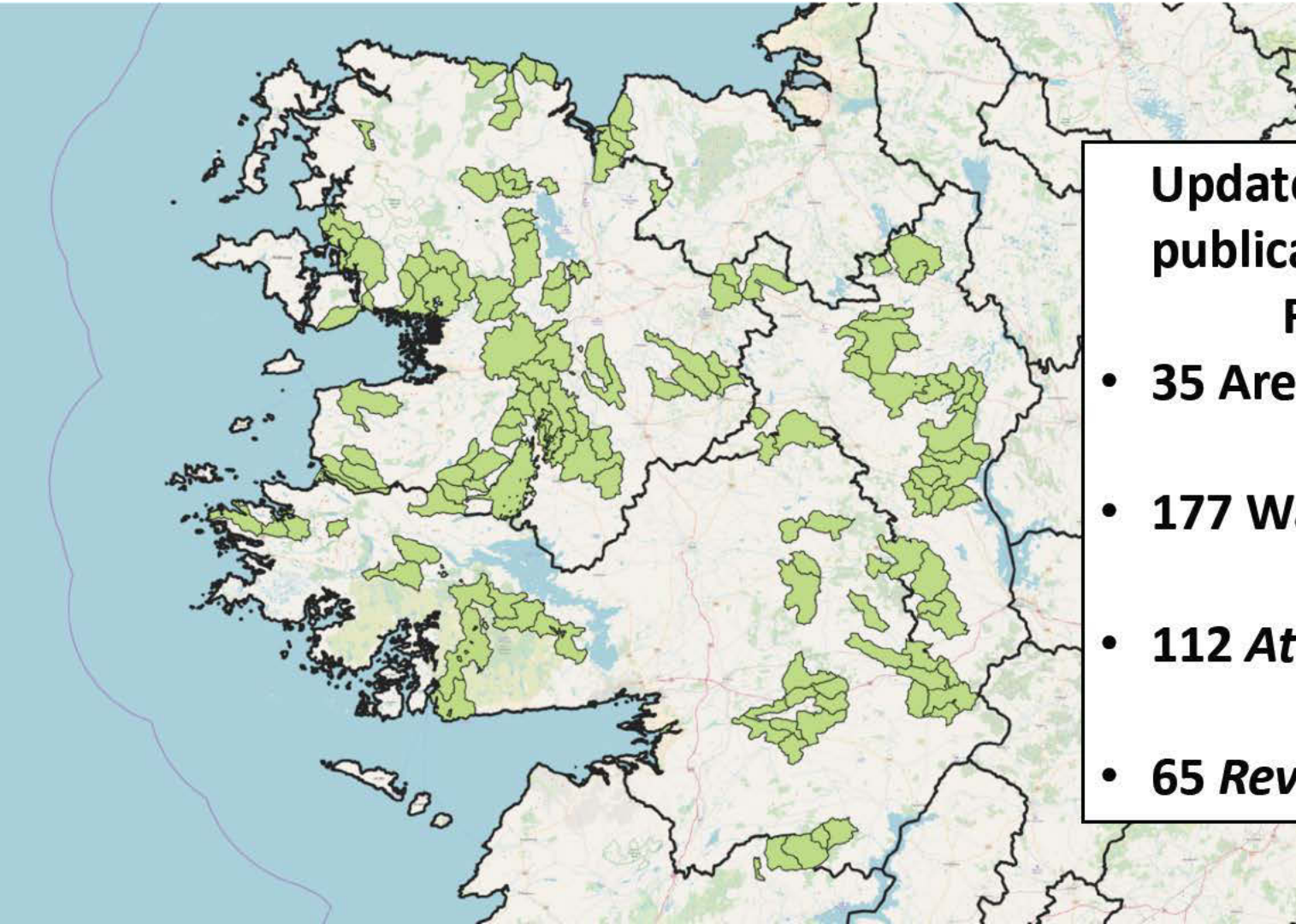
- Noel Meehan – Athenry, Programme Manager
- Ivan Kelly – Athenry
- Peter Comer – Claremorris
- Mary Roache – Westport
- Kieran Kenny – Roscommon
- Simona Ciorita – Aurivo
- Paddy Purcell / Jerry Ryan - Arrabawn





Where will we be working?

Our work will focus in the Priority Areas for Action (PAA) below

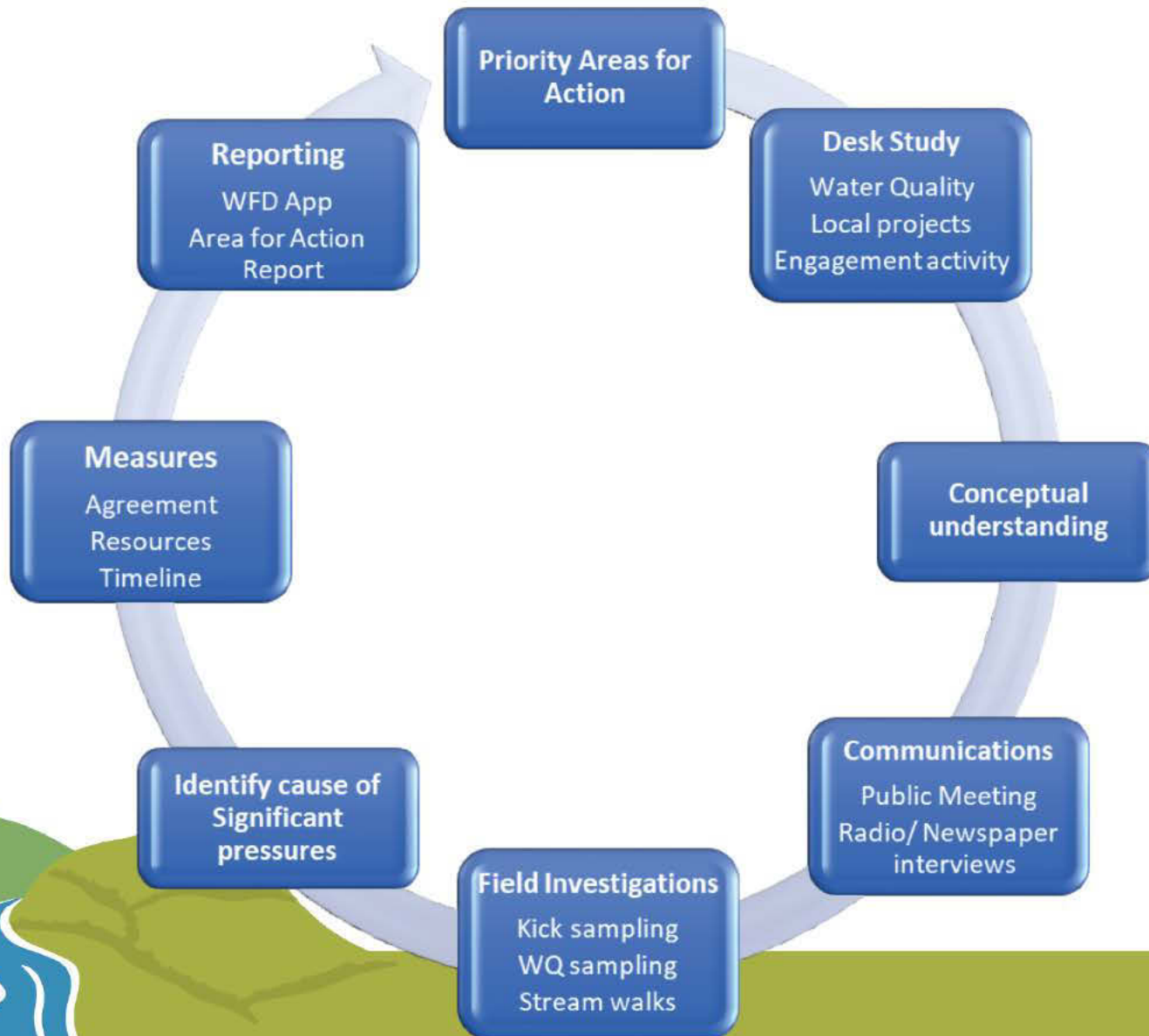


**Updated list since
publication of the
RBMP**

- **35 Areas for Action**
- **177 Waterbodies**
- **112 *At Risk***
- **65 *Review***



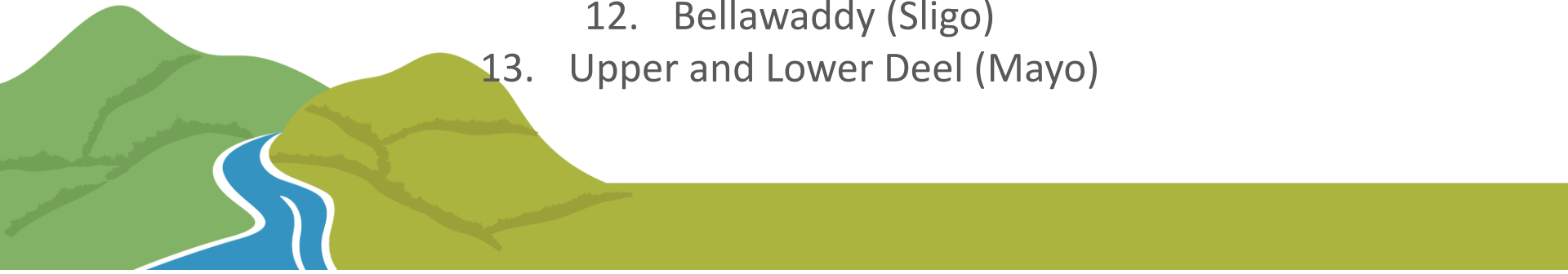
What will we be doing in the PAA? – Further Characterisation Steps



Where will we be starting in 2018?

We have drafted desk studies or are drafting desk studies in the following PAAs at present:

1. Lough Mask – Carra (Mayo)
2. Dawros (Galway)
3. St Cleran's (Galway)
4. Rafterd (Galway)
5. Recess (Galway)
6. Bundorragha (Mayo)
7. Glenree (Mayo)
8. Louisburgh Bunowen (Mayo)
9. Carrowmore Lake (Mayo)
10. Jiggy – Hind (Roscommon)
11. Clooneigh (Roscommon)
12. Bellawaddy (Sligo)
13. Upper and Lower Deel (Mayo)



- Catchment Science & Management
- Local Catchment Assessment
- Biosecurity
- Risk Assessment
- Water Safety
- Agricultural Mitigation Measures

Training





Contact

Bernadette White | Catchments Manager

Western Region

Local Authority Waters Support and Advice Team

Foireann Tacaíochta agus Comhairle Uiscí na nÚdarás Áitiúil

Galway County Council, Liosbán Industrial Estate, Tuam Rd, Galway

bwhite@lawsat.ie

085 803 0094

