

Lough Carra Catchment: Moving from Assessment to Action

Peter Mitchell
Update to the Lough Carra Catchment Association
1st November 2021



Engagement with OPW

- LAWPRO and OPW undertook a joint field trip on 8th of October 2021 to a selection of sites within the Lough Carra catchment which have been assessed during LAWPRO's local catchment assessment (LCA) work over a number of seasons.
- The purpose of the field trip was to communicate LAWPRO's LCA findings to OPW and avail of an opportunity to reduce sediment to waterbodies.

Attendees:

| Name | Organisation | Role |
|----------------|--------------|--|
| Peter Mitchell | LAWPRO | Catchment Scientist |
| Francis Deery | LAWPRO | Catchment Scientist |
| Thomas Carolan | LAWPRO | Community Water Officer |
| Sean Langan | OPW | Environment Section |
| Liam Farrell | OPW | Arterial Drainage Maintenance Engineer |
| Owen Hannon | OPW | Arterial Drainage Maintenance Engineer |
| Pat Collins | OPW | Arterial Drainage Maintenance Foreman |



Lower Ballintubber stream, February 2021



March 2020



Br. East of Carrowmore on Annie's (June 2019) & (September 2019)

B.



A.

A.



B.

Site 4: Annie's River (Clo

Local Authority
Water
Pr
via out.com.ie



Annie's river at Clooneen Bridge (September 2019)



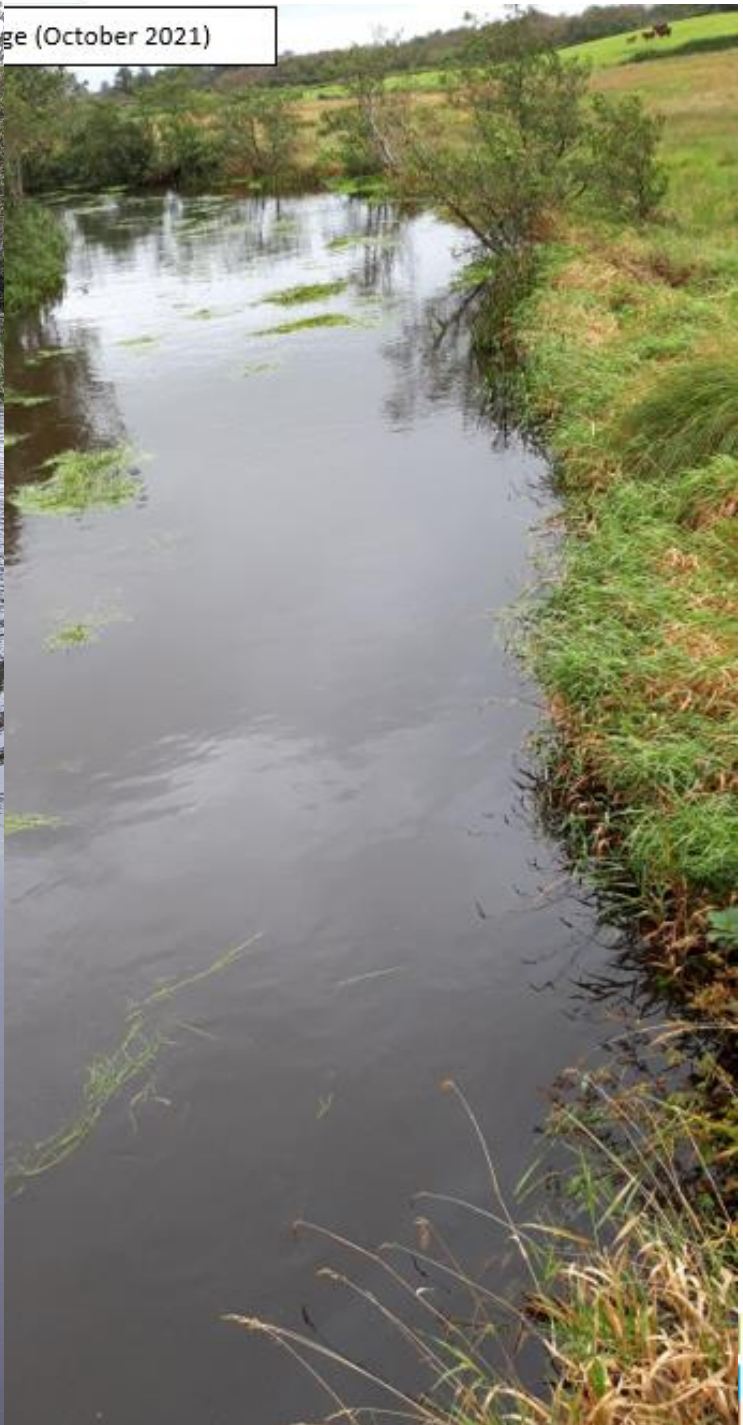
Annie's river at Clooneen Bridge (February 2021)



Annie's river at Annie's Bridge (February 2021)



ge (October 2021)



Portroyal stream (400 M
upstream from Lough Carra
(LHS – u/s of Bridge)
(RHS – d/s of Bridge)
September, 2020

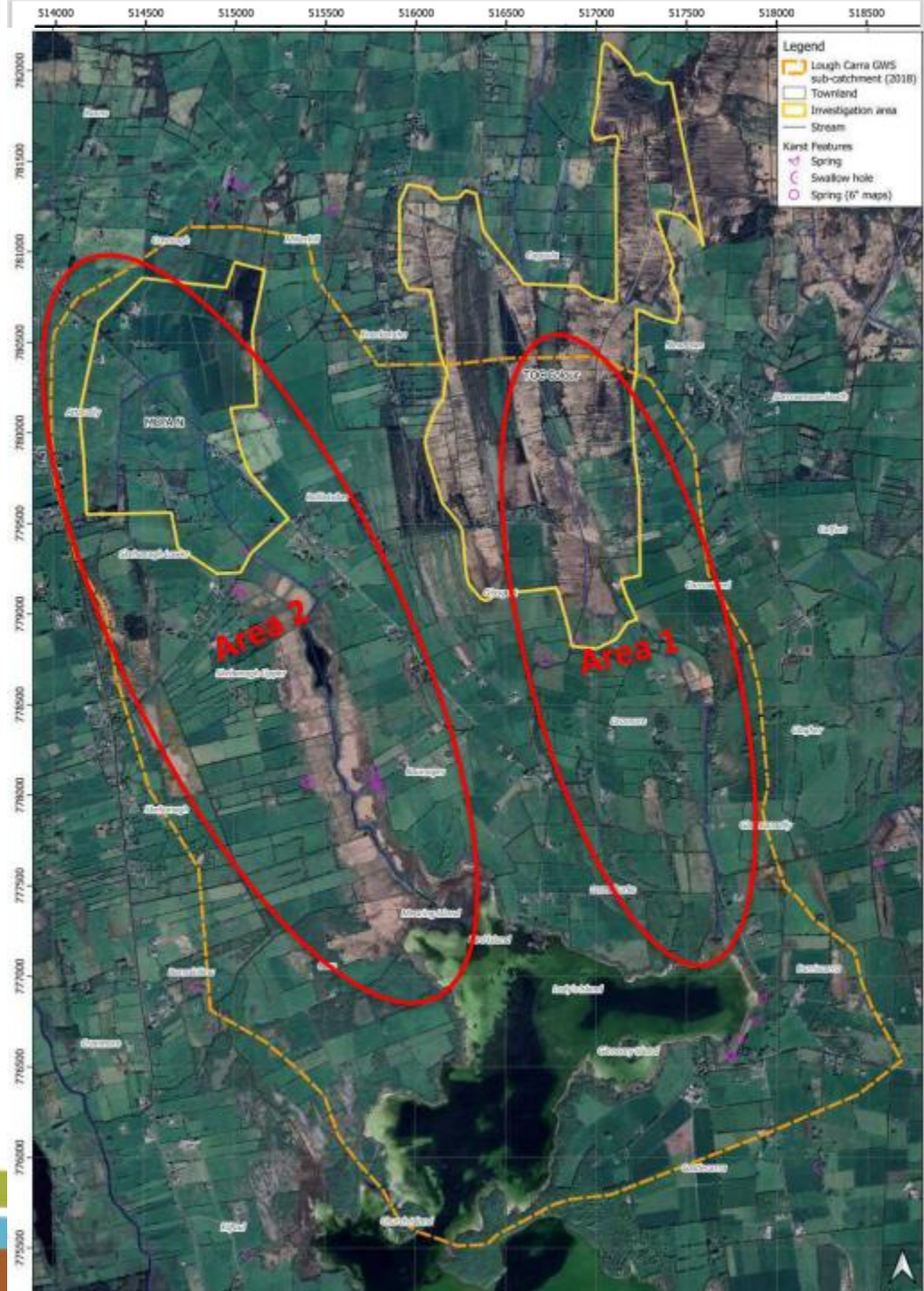


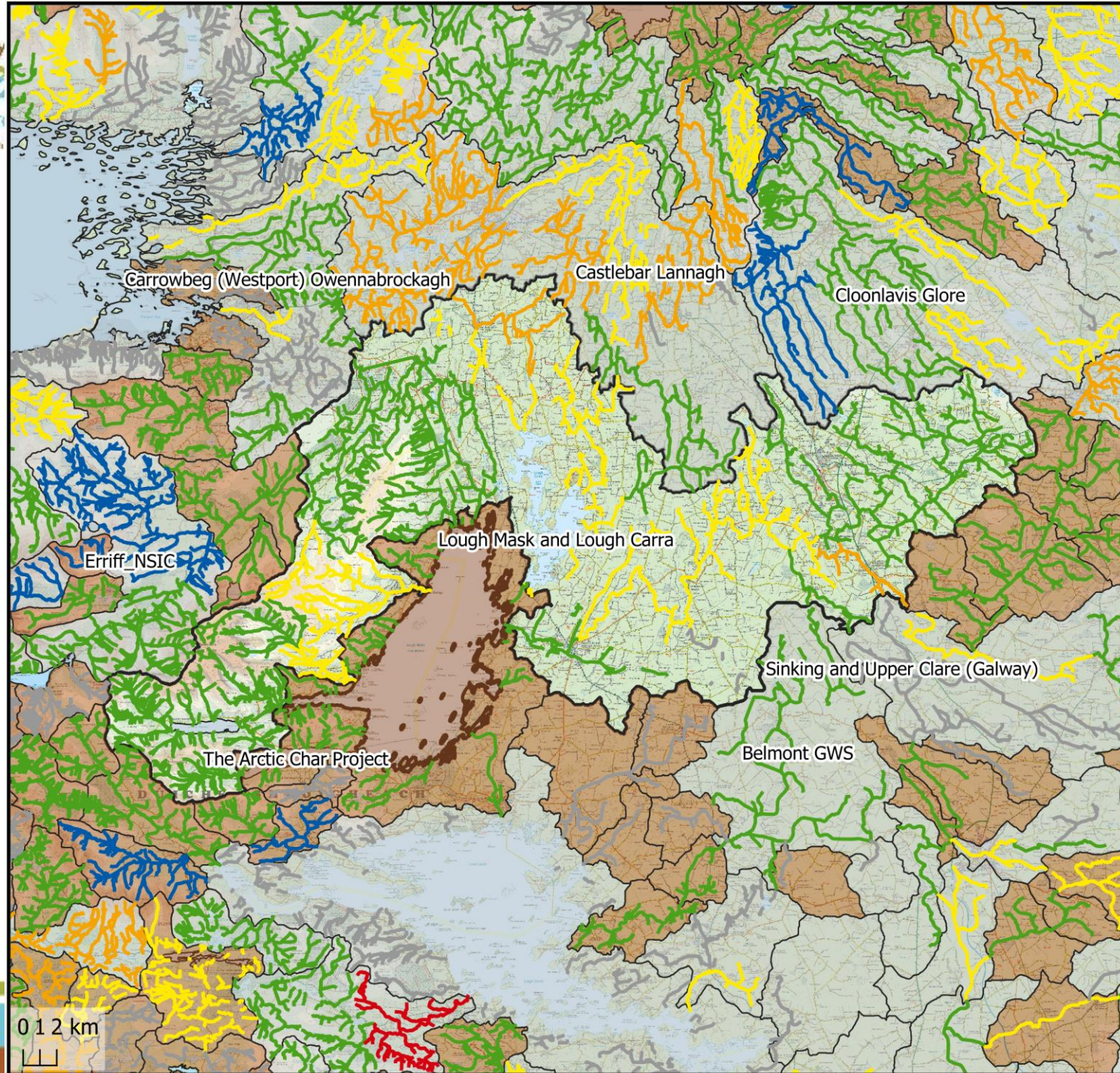
Engagement with NFGWS (& CDM Smith)

- The National Federation of Group Water Schemes (NFGWS) has secured funding from the Department of Housing, Local Government and Heritage (DHLGH) towards its Integrated Source Protection Plan (ISPP) roll-out on community-owned group water schemes (GWSs) across the country.
- 14 ISPPs in the current year, building on learnings from the ongoing NFGWS Source Protection Pilot Project in Roscommon, Westmeath and Monaghan.
- ISPPs are scientifically-based, scheme-specific plans that detail targeted actions by a range of stakeholders (and communities) that can reverse or avert pollution in a drinking water source catchment/zone of contribution.
- CDM Smith have been contracted by NFGWS to undertake a deskstudy and catchment walks within the Carra GWS.
- Focus was on locating and sampling the various mapped springs within the GWS catchment sub basin.



| Name | Organisation | Role |
|-------------------|--------------|-------------------------|
| Philip Schuler | CDM Smith | Water Division |
| Fani Papageorgiou | CDM Smith | Environmental Scientist |
| Sean Corrigan | NFGWS | Programme Lead |
| Sinead Higgins | NFGWS | Programme Lead |
| Peter Mitchell | LAWPRO | Catchment Scientist |
| Peter Comer | ASSAP | Advisor |
| Patrick Mc Ging | MCC | GWS Caretaker |





Lough Mask and Lough Carra AFA

WFD River Status 2018

High

Good

Moderate

Poor

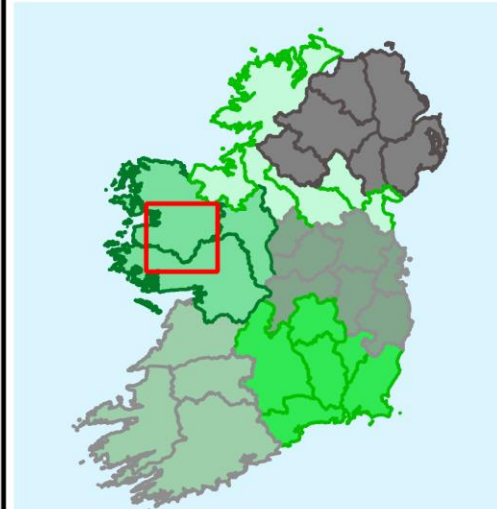
Bad

Unassigned

Dissolved AFA by name

Not AFA

© Ordnance Survey Ireland. All rights reserved.
Licence number: 2020/OSI_NMA_073





THANK YOU & ANY QUESTIONS