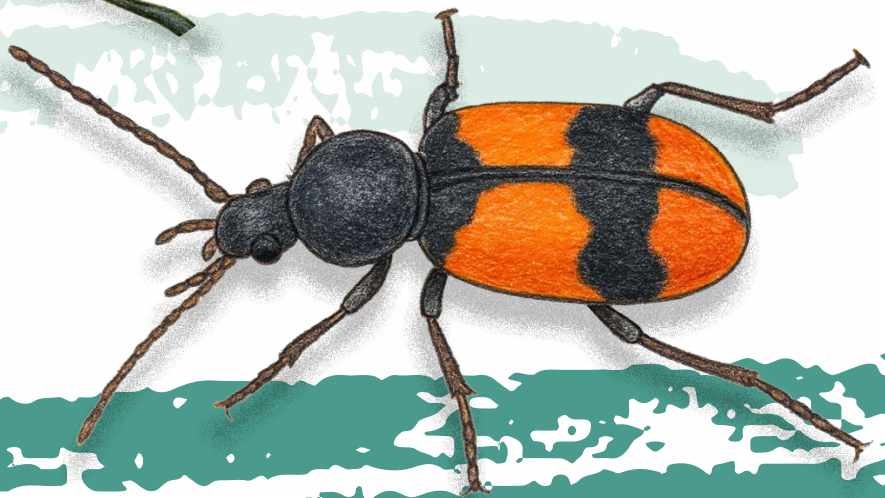


*Lough Carra's*  
**YOUNG EXPLORERS**



**INSECTS**  
of Lough Carra



Funded by  
**An Chomhairle Oidhreachta**  
**The Heritage Council**



LOUGH CARRA, THE BEST EXAMPLE OF A SHALLOW, MARL LAKE IN WESTERN EUROPE, AND ITS CATCHMENT ARE HOME TO A VIBRANT ARRAY OF INSECTS. AMONG THE REEDS AND RUSHES, YOU CAN SPOT THE JEWEL-LIKE DAMSELFLIES, THEIR IRIDESCENT WINGS CATCHING THE SUNLIGHT AS THEY HUNT FOR SMALLER PREY. NATIVE BEES AND HOVERFLIES AND MANY OTHER SPECIES OF INSECTS ARE DRAWN TO THE WILDFLOWERS FOUND IN THE SEMI-NATURAL GRASSLANDS THAT FRINGE THE LAKESHORE. THEY COLLECT NECTAR FROM THE FLOWERS AND POLLINATE THE PLANTS.

AS WITH THE BUTTERFLIES, THE DRAGONFLIES OF LOUGH CARRA ARE REMARKABLY ABUNDANT BOTH IN NUMBERS AND VARIETY. THE DRAGONFLIES (A GROUP WHICH INCLUDES DRAGONFLIES AND DAMSELFLIES) NEED GOOD-QUALITY HABITATS BOTH ON LAND, WHERE THE ADULTS HUNT AND MATE, AND IN THE WATER WHERE THE EGGS ARE LAID AND THE LARVAE LIVE. OF THE 24 RESIDENT SPECIES IN IRELAND, 14 HAVE BEEN RECORDED AROUND LOUGH CARRA.

THE INSECTS OF LOUGH CARRA NOT ONLY ENHANCE THE VISUAL SPLENDOUR OF THIS REMARKABLE LANDSCAPE BUT ACT AS A GAUGE TO THE HEALTH OF ITS ECOSYSTEM. FROM POLLINATION TO DECOMPOSITION, THEY CONTRIBUTE TO THE INTRICATE WEB OF LIFE THAT MAKES LOUGH CARRA VERY SPECIAL. SEVERAL SPECIES FOUND AROUND CARRA ARE VERY RARE INDEED, SUCH AS THE CRUCIFIX GROUND BEETLE AND THE TRANSPARENT BURNET MOTH.

HOWEVER, ALL OF THE INSECTS DEPEND ON HIGH-QUALITY HABITATS THAT ARE INCREASINGLY THREATENED BY CHANGES IN LAND USE AND NUTRIENT ENRICHMENT. PROTECTING THESE ECOSYSTEMS IS ESSENTIAL FOR THE SURVIVAL OF THESE DIVERSE SPECIES AND THE OVERALL HEALTH OF OUR ENVIRONMENT.

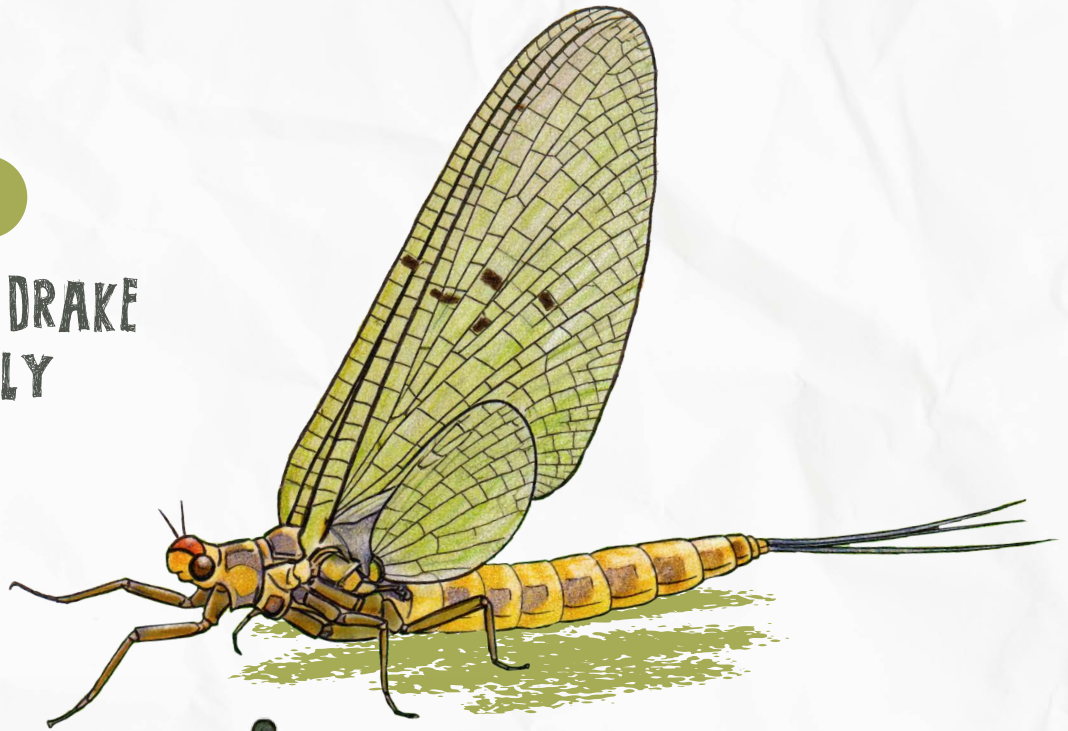


*Lough Carra's*  
**YOUNG EXPLORERS**

# LEARN MORE ABOUT THE INSECTS OF LOUGH CARRA

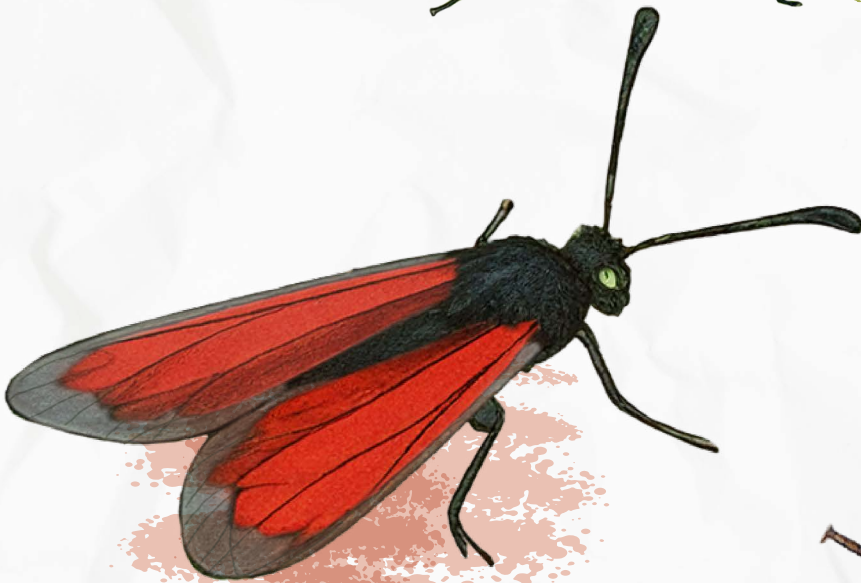
1

**GREEN DRAKE  
MAYFLY**



2

**TRANSPARENT BURNET  
MOTH**



3

**CRUCIFIX GROUND  
BEETLE**



**LCCA**

Lough Carra  
Catchment  
Association

*Lough Carra's*  
**YOUNG EXPLORERS**

# GREEN DRAKE MAYFLY

(IRISH NAME: CUIL BHEALTAINÉ)



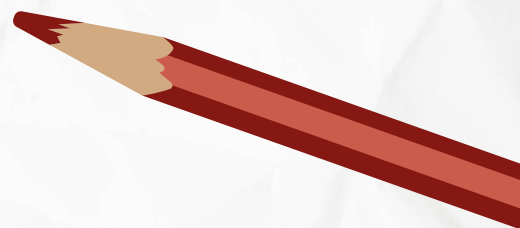
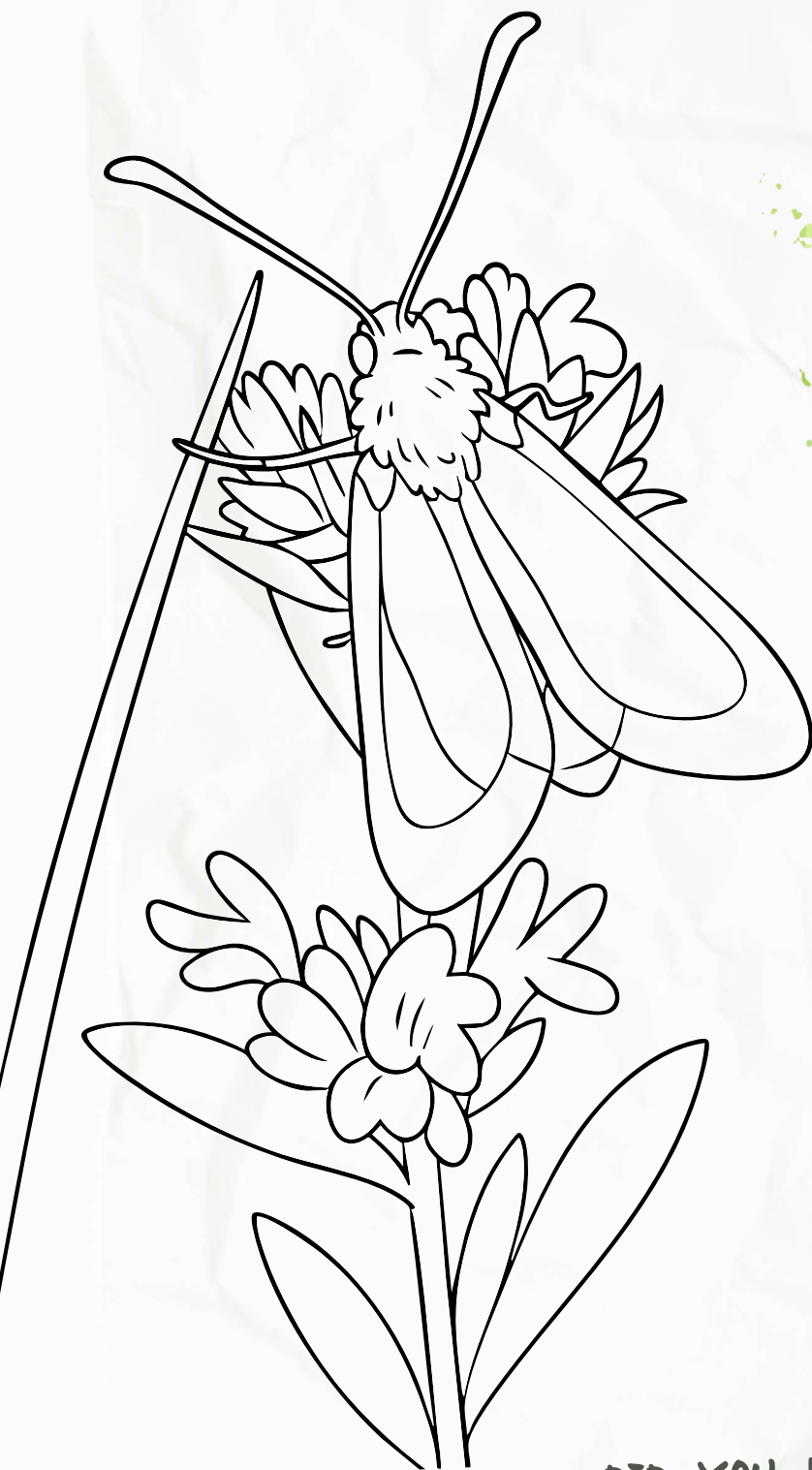
## DID YOU KNOW

THIS MAYFLY IS FOUND IN UNPOLLUTED LAKES AND FAST FLOWING RIVERS. IT HAS THREE LONG TAIL PARTS, CLEAR WINGS AND A SLENDER BODY. THE NYMPH SPENDS UP TO TWO YEARS IN THE WATER BEFORE HATCHING IN MAY. THE MAYFLY WAS ONCE VERY COMMON AT LOUGH CARRA BUT THEIR NUMBERS HAVE DECLINED IN RECENT YEARS. THEY ARE AN IMPORTANT PART OF A HEALTHY ECOSYSTEM.



Lough Carra's  
YOUNG EXPLORERS

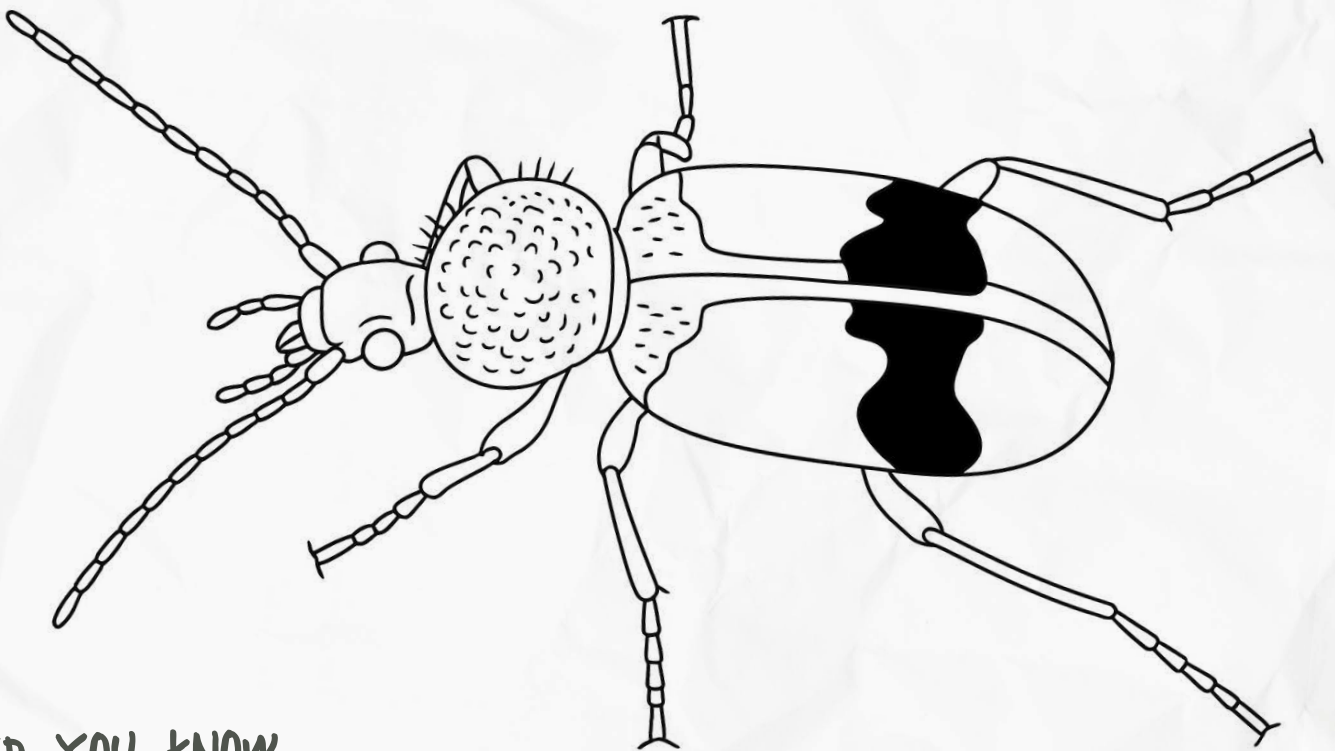
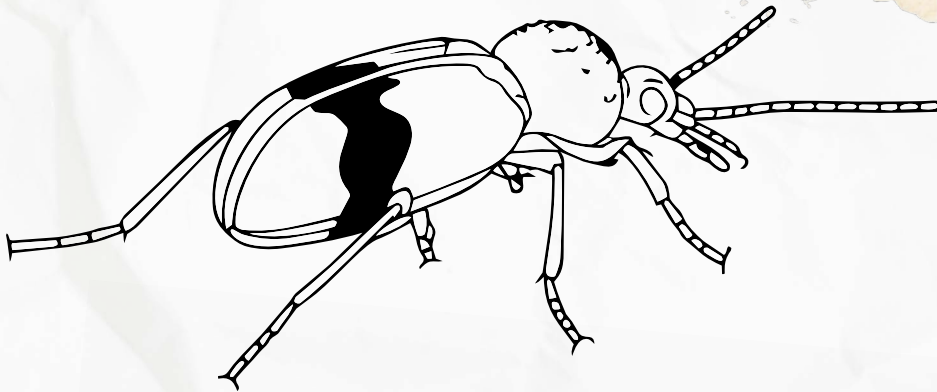
# TRANSPARENT BURNET MOTH



## DID YOU KNOW

THE TRANSPARENT BURNET MOTH IS ONLY FOUND IN LIMESTONE HABITATS IN THE WEST OF IRELAND. IT FEEDS ON WILD THYME. THEY CAN BE SEEN FLYING ON SUNNY DAYS IN JUNE AND JULY.

# CRUCIFIX GROUND BEETLE



## DID YOU KNOW

THE CRUCIFIX GROUND BEETLE GETS ITS NAME FROM THE RED SPOTS ON ITS WING CASES WHICH APPEAR LIKE A CROSS PATTERN. THIS IS AN EXTREMELY RARE BEETLE, WITH FEWER THAN TEN RECORDED IN IRELAND. THIS BEETLE WAS FOUND BY CHRIS HUXLEY ON THE SHORES OF LOUGH CARRA.

# INSECTS OF LOUGH CARRA (WORD SEARCH)

C D T B E S V F C H A Y F L H F Q U K L  
A K F C U A N Z U G B A E M Y K G U F Y  
R F J E V U I I X W S T S F S Y Z O D X  
D F G F E E D C U T R Y S N Z A O R V E  
E S Q I U J F F U J C F O F C W F W Q I  
R I L S V R B O W A B Y Y E K T R F N J  
B E A B G R E E N D R A K E M A Y F L Y  
E N N M G Y C V V J C Q J J J D A Y A P  
E W E O Q R F X V D L U E D O L J E L K  
D B C K I P X T C Q W A Q D S Z K R B Z  
G F T M P O N Y U G E T I G E R M O T H  
L V A A U G G X H N I C K B B V Z W Q O  
C D R Y Q S H X P V D V O U G M O E K X  
O P F B X D W Q E R E K R S W S H U A G  
E K U U M Q V V W K X H M R Y X W D T V  
J N Q G C D H A B I T A T A W S P T X P  
T A K B Z D X L H J O V E P T Z T M W D  
W A B I C K F A N Z Y B P B W D D E P H  
Y N I E V D R V L A D Y B I R D K R M J  
X K K I Q J P U N Q D N N F L X U G P J

FIND THE FOLLOWING WORDS IN THE PUZZLE.

WORDS ARE HIDDEN → AND ↓ AND ↘

GREEN DRAKE

LADYBIRD

HABITAT

MAYFLY

MAY BUG

NECTAR

ECOSYSTEM

TIGER MOTH

CARDER BEE



*Lough Carra's*  
**YOUNG EXPLORERS**



[www.loughcarra.org](http://www.loughcarra.org)



Funded by

**An Chomhairle Oidhreachta**  
**The Heritage Council**