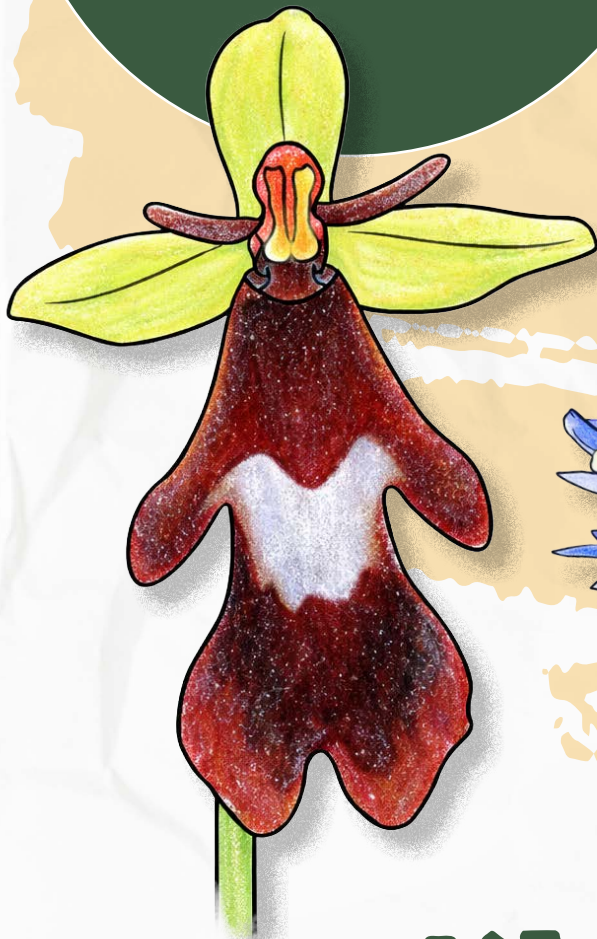


Lough Carra's
YOUNG EXPLORERS



WILDFLOWERS
of Lough Carra



Funded by
An Chomhairle Oidhreachta
The Heritage Council



THERE ARE WELL OVER 400 SPECIES OF 'HIGHER' PLANTS (I.E. TREES, SHRUBS, HERBS, GRASSES, SEDGES, ETC.) GROWING AROUND THE LAKESHORE OF LOUGH CARRA AND IN SOME PARTS OF ITS CATCHMENT. THIS IS AROUND TWO THIRDS OF THE NUMBER FOUND IN THE BURREN IN CO. CLARE, OR WELL OVER A THIRD OF THOSE FOUND IN THE WHOLE OF IRELAND. FOR SUCH A SMALL AREA, THIS IS AN EXTREMELY RICH FLORA AND, LIKE THE BURREN, IT CONTAINS SOME VERY SPECIAL PLANTS THAT OCCUR IN ONLY A VERY LIMITED NUMBER OF PLACES IN IRELAND.

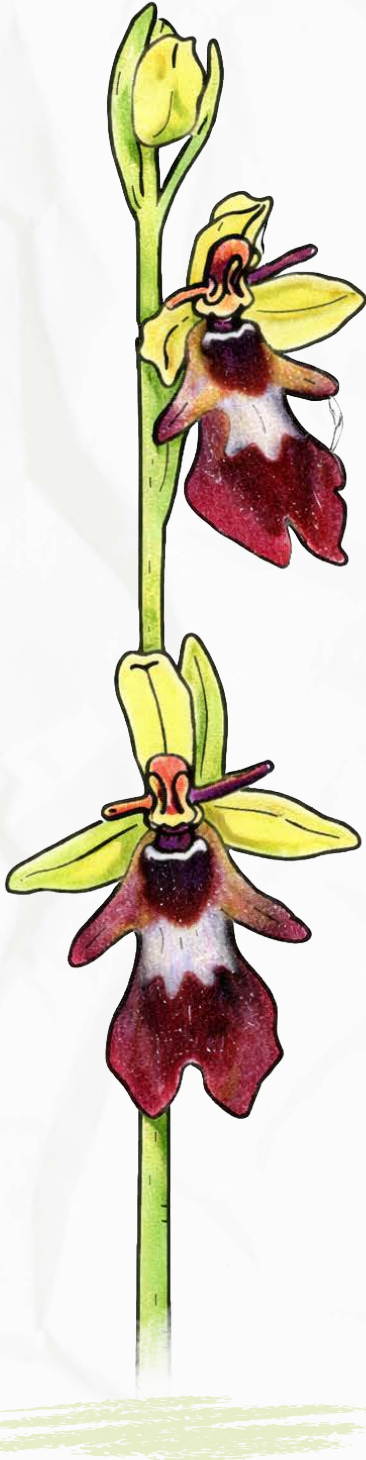


Lough Carra's
YOUNG EXPLORERS

LEARN MORE ABOUT THE WILDFLOWERS OF LOUGH CARRA

1

FLY ORCHID



2

SPRING GENTIAN

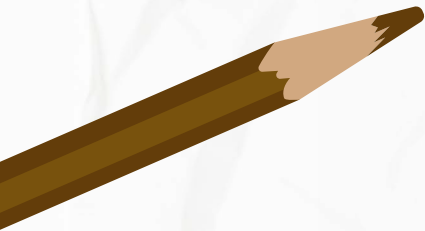
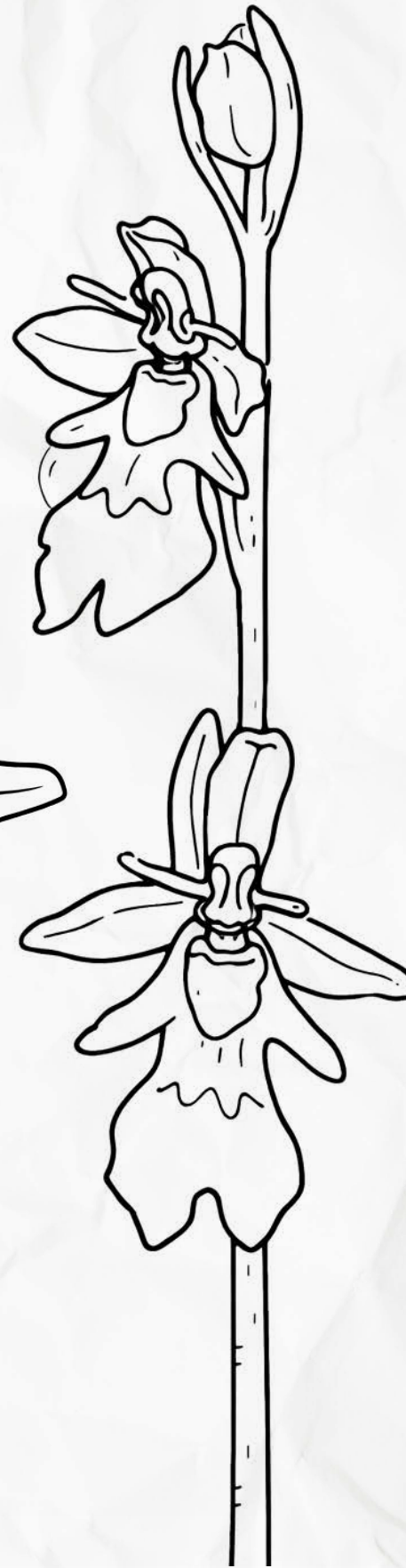
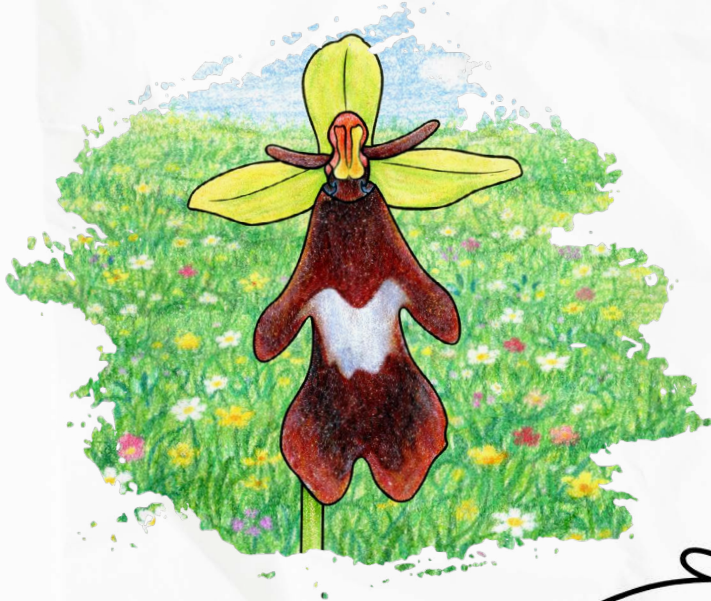


3

DEVIL'S-BIT SCABIOUS

FLY ORCHID

(IRISH NAME: MAGAIRLÍN NA GCUILEANNA)



DID YOU KNOW

THE FLY ORCHID GROW BETWEEN 20 - 60CM IN HEIGHT. IT FLOWERS IN MAY & JUNE. THE FLOWERS RELEASE A SCENT WHICH ATTRACTS MALE DIGGER WASPS. POLLINATION HAPPENS WHEN A DUSTING OF POLLEN STICKS TO THE MALE WASP WHICH HE THEN CARRIES TO THE NEXT FLOWER. THIS FLOWER IS VERY RARE IN IRELAND BUT FOUND IN A FEW LOCATIONS AROUND LOUGH CARRA.



Lough Carra's
YOUNG EXPLORERS

SPRING GENTIAN

(IRISH NAME: CEADHARLACH BEALTAINÉ)



DID YOU KNOW

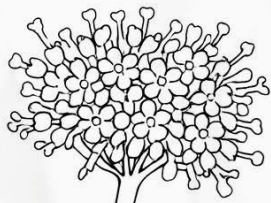
SPRING GENTIAN GROWS 5 - 10CM IN HEIGHT AND FLOWS IN APRIL, MAY AND JUNE. THIS IS A VERY RARE FLOWER AND IS ONLY FOUND ON DRY LIMESTONE GRASSLAND IN THE WEST OF IRELAND. THIS IMPORTANT TYPE OF LAND IS FOUND IN ONLY A FEW LOCATIONS AROUND LOUGH CARRA.



Lough Carra's
YOUNG EXPLORERS

DEVIL'S-BIT SCABIOUS

(IRISH NAME: ODHRACH BHALLACH)



DID YOU KNOW

DEVIL'S-BIT SCABIOUS GROW UP TO 75CM IN HEIGHT. IT FLOWERS IN JULY, AUGUST AND SEPTEMBER. IT IS POLLINATED BY MANY INSECTS INCLUDING, BUTTERFLIES AND BUMBLEBEES. IT IS AN IMPORTANT FOOD PLANT OF THE CATERPILLARS OF THE RARE MARSH FRITILLARY BUTTERFLIES.

WILDFLOWERS OF LOUGH CARRA (WORD SEARCH)

M B K H L L Y C L A D Y S S M O C K R G
K N N J N B J E A H P N A D Y T K I A V
D K Y A J V E G U H E R M S H H J G R G
Z E B H Q N O E Q D V W I N Z E D X B T
X D V I W Y Z K O V L T P M D E B M F M
O D H I R F H E A R M G J J R H Z D C L
W W S Z L D L L F G C F S Z H O P P A P
Q M A Q W S S Y T D V H K J E B S U R Q
W C E B V O B F O T Q D I B F R I E L U
B H P B Y I W I O R G L O D O G O Z I G
X Q R O E Z P P T O C U S P N Q Y D N Z
S T N A R Q N A Q S T H Y P D P E Q E A
K C N O E I M U Z G C T I V I U W N T L
Y O B P R R D U I N M A R D Q K X I H Q
E W K N A P W E E D O Y B E S D A V I A
O S C S L T Z D V P V J M I F I F H S Z
X L R C F V X D M Q K U W A O O S X T S
G I V S F S T C T C T X F O X U I R L F
U P O S P R I N G G E N T I A N S L E K
G N B A S I D O R C T N V T D X W H U L

FIND THE FOLLOWING WORDS IN THE PUZZLE.

WORDS ARE HIDDEN → AND ↓ AND ↘

DEVIL'S-BIT
SCABIOUS

BIRD'S-FOOT
TREFOIL

CARLINE THISTLE

SPRING GENTIAN

LADY'S SMOCK

BEE ORCHID

FLY ORCHID

PRIMROSE

KNAPWEED

COWSLIP



Lough Carra's
YOUNG EXPLORERS



www.loughcarra.org



Funded by

An Chomhairle Oidhreachta
The Heritage Council